



## JRZL - Series Rotary Lobe Pumps

### Applications:

- food processing, dairy, beverage, pharmaceutical, personal care and industrial markets

### Materials:

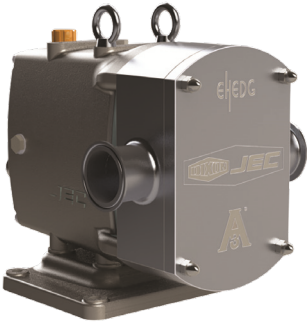
- product contact: 316L stainless steel
- elastomers: EPDM (standard), Buna and FKM
- stainless steel gear box standard except 400 series - white epoxy painted cast iron

### Features:

- front loading seal options:
  - single(standard)and double mechanical seals, TC vs TC (standard)
  - single and double O-ring seals
  - triple lip seal
  - flush option available on all seal types
- rotors:
  - bi-wing (standard)
  - single wing
  - bi-lobe
  - tri-lobe
  - multi-lobe
  - heli-lobe
  - hot clearance for temperatures above **248°F (120°C)**
  - viscosity range: 0 - 1,000,000 cP
- connection: clamp (standard), others available upon request
- repair kits available

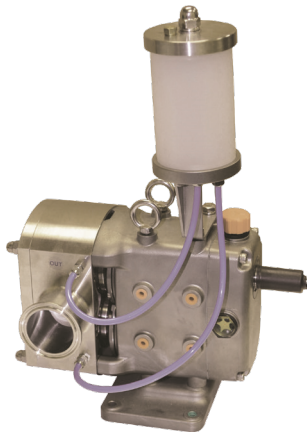
Pumps

A



Port Size	Gal / Rev	PSI	Model
1"	0.005	<b>300</b>	<b>JRZL105</b>
1"	0.01	<b>300</b>	<b>JRZL110</b>
1½"	0.03	<b>175</b>	<b>JRZL115</b>
2"	0.06	<b>115</b>	<b>JRZL120</b>
2"	0.11	<b>175</b>	<b>JRZL220</b>
2½"	0.16	<b>115</b>	<b>JRZL225</b>
3"	0.27	<b>175</b>	<b>JRZL330</b>
4"	0.38	<b>115</b>	<b>JRZL340</b>
4"	0.60	<b>175</b>	<b>JRZL440</b>
5"	0.88	<b>115</b>	<b>JRZL450</b>

## Self Contained Flushing System



### Features:

- no additional piping needed
- easy maintenance
- available for all JRZL-Series pumps with either glass or acrylic chambers

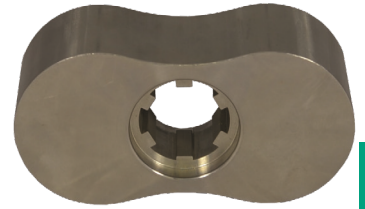
## JRZL - Series Rotary Lobes



Bi-wing



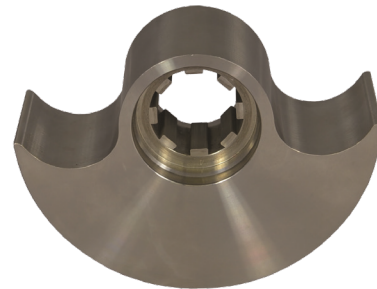
Heli-lobe



Bi-lobe



Tri-lobe



Single-wing

### Maximum Speed (RPM)

Model	Bi-wing	Heli-lobe <sup>1</sup>	Bi-lobe	Tri-lobe	Single-wing	Multi-lobe
<b>JRZL105</b>	1000	1600	800	800	100	1000
<b>JRZL110</b>	1000	1600	800	800	100	1000
<b>JRZL115</b>	1000	1600	800	800	100	1000
<b>JRZL120</b>	800	1600	800	800	100	800
<b>JRZL220</b>	700	1400	700	700	100	400
<b>JRZL225</b>	700	1400	700	700	100	400
<b>JRZL330</b>	600	1200	600	600	100	NA
<b>JRZL340</b>	600	1200	600	600	100	NA
<b>JRZL440</b>	500	1000	500	500	100	NA
<b>JRZL450</b>	500	1000	500	500	100	NA

<sup>1</sup> Pulsation free heli-lobe rotors give the pump increased capacity through higher speed limits

## JRZL - Series Rotary Lobe Pump Options



### Thermal Jacket Pumps

Designed for products that require temperature control such as sugars, chocolate, corn syrup and brewer's yeast with easy attachment to pump front cover and/or casing.



### Rectangular Inlet

Enlarged rectangular inlet allows highly viscous products such as semi-solid pastes or mixtures containing semi-solid pieces to be pumped.



### Pressure Relief Valve

The pressure relief valve protects the system from pressure peaks or restrictions in the discharge, providing a pressure relief valve loop from discharge to the suction areas up to **145 PSI**.



### Ultra Clean Pumps

Fully self-draining pump head and external rotor fixing can eliminate any contaminations and internal crevices. Excellent for sterile pharmaceuticals, ultra-hygienic food processing and aseptic manufacturing. Available in all sizes.



### High Pressure Pumps

High pressure pumps have a front bearing cover to support shafts on front and back position. The well-balanced shaft design can handle pressures up to **435 PSI** without shaft deflection.



### Acculab

Specially designed for superior metering accuracy with multi-lobe rotors or spur gear rotors which allow minimum pulsation, precise volumetric dosing and packaging, lab and pilot plants or manufacturing applications as well as general fluid transfer.

## JRZF 500 - Series Rotary Lobe Pumps

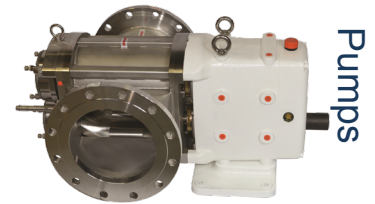
### Materials:

- product contact: 316L stainless steel
- elastomers: EPDM (standard) and FKM
- gear box: white epoxy painted cast iron

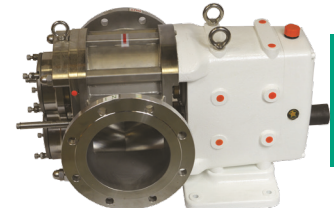
### Features:

- front loading seal options: single (standard) & double mechanical seals, TC vs TC (standard)
- rotor: heli-lobe
- connection: flanged

Port Size	Gal / Rev	PSI	Max. Speed RPM	Model
8"	1.85	<b>435</b>	500	<b>JRZF580</b>
10"	2.64	<b>435</b>	500	<b>JRZF5100</b>
12"	3.17	<b>435</b>	500	<b>JRZF5120</b>



JRZF5100



JRZF580

A

## JRZW 120 Series Rotary Lobe Pump - The Wine Pump

### Applications:

- must and lees
- transfer
- bottling

### Size:

- 2" clamp

### Materials:

- 316L
- heli-lobe rotor: EPDM rubber
- gear box: white epoxy painted cast iron
- elastomers: EPDM (standard) & FKM

### Features:

Wine Pump

- flow and pressure: maximum flow: **66 GPM**, maximum working pressure: **87 PSI**
- single mechanical seal (standard) TC vs TC
- double mechanical seal
- triple lip-seal with ceramic coated sleeve

### Optional Pump Cart

- pumps can be mounted on a cart with flat free wheels or casters
- Nord adjustable speed gearmotor is standard
- complete range of VFD options available



## JRZA Acculab Series Rotary Lobe Pump

### Applications:

- designed for superior metering accuracy with minimum pulsation
- precise volumetric dosing and packaging
- lab and pilot plants
- general fluid transfer

### Materials:

- 316L stainless steel
- gear box: stainless steel
- elastomers: EPDM (standard) and FKM

### Features:

- rotor information: multi-lobe rotor
- viscosity range: up to 100,000 cPs
- noise level: 60 ~ 80 dB
- seal options: single mechanical seal (standard) TC vs TC and double mechanical seal
- maximum displacement: 3.5 gpm @ 900 rpm (water at **0 PSI**)



pump shown with integral gear motor