



The Right Connection®

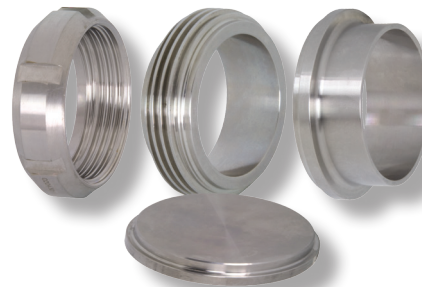
Need "The Right Connection" to mate your European equipment to your existing lines?
Dixon Sanitary stocks...

European Fittings



RJT BS: 4825

DIN 11851



SMS

- available in DIN, RJT, and SMS
- imperial (inch) sizes – 1" to 4"
- blank cap, welding males and welding liners are 316 stainless
- nuts are 304 stainless
- spanner wrenches and gaskets are stocked
- other European fittings are available upon request
- part numbers and dimensions are listed in the fittings catalog
- all stock ships in 24 hours

*Remember for "The Right Connection"
always use Dixon Sanitary Fittings.*

Dixon Sanitary